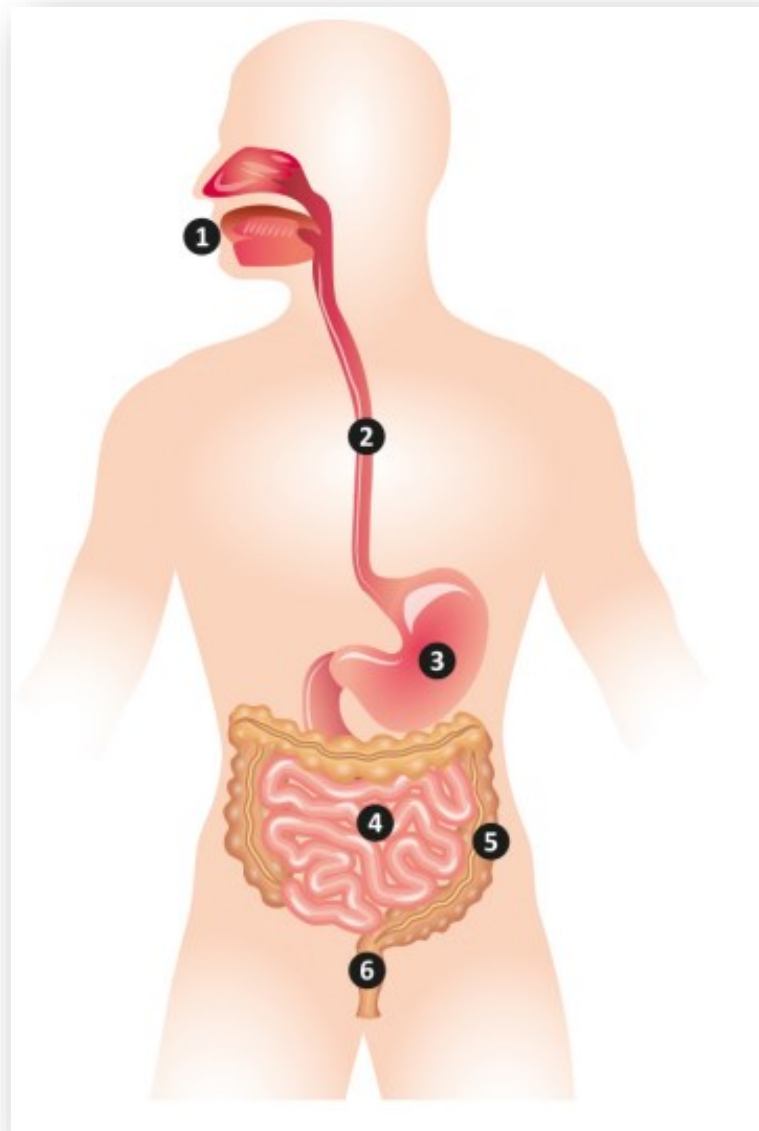


## Y4: Teeth and Tummies: Knowledge Organiser



### The digestive system:

1. Teeth chew food into small pieces in the **mouth**. These pieces mix with saliva containing enzymes to start digestion.
2. The muscles in the **oesophagus** move a ball, or bolus, of food down to the stomach.
3. The muscles in the **stomach** churn the food and acids and enzymes break it down. This can take 2-6 hours.
4. Partially digested food travels through the **small intestine** and nutrients are absorbed into the body. This can take 3-5 hours.
5. The **large intestine** removes excess water from the food that can't be digested to make solid faeces (poo). This can take 4-72 hours.
6. The faeces are stored in the **rectum** ready to leave the body.

A **food chain** shows how plants and animals get their energy.

**Prey** is an animal that is hunted by another for food.

A **predator** is an animal that hunts kills and eat other animals for food'

A **producer** is an organism that makes is own energy from the sun.

